

# CERTIFICATE OF LOCATION OF GOVERNMENT CORNER

NORTHEAST Corner of Section 16, Township 107N, Range 39W

5th Principal Meridian, State of Minnesota, County of MURRAY

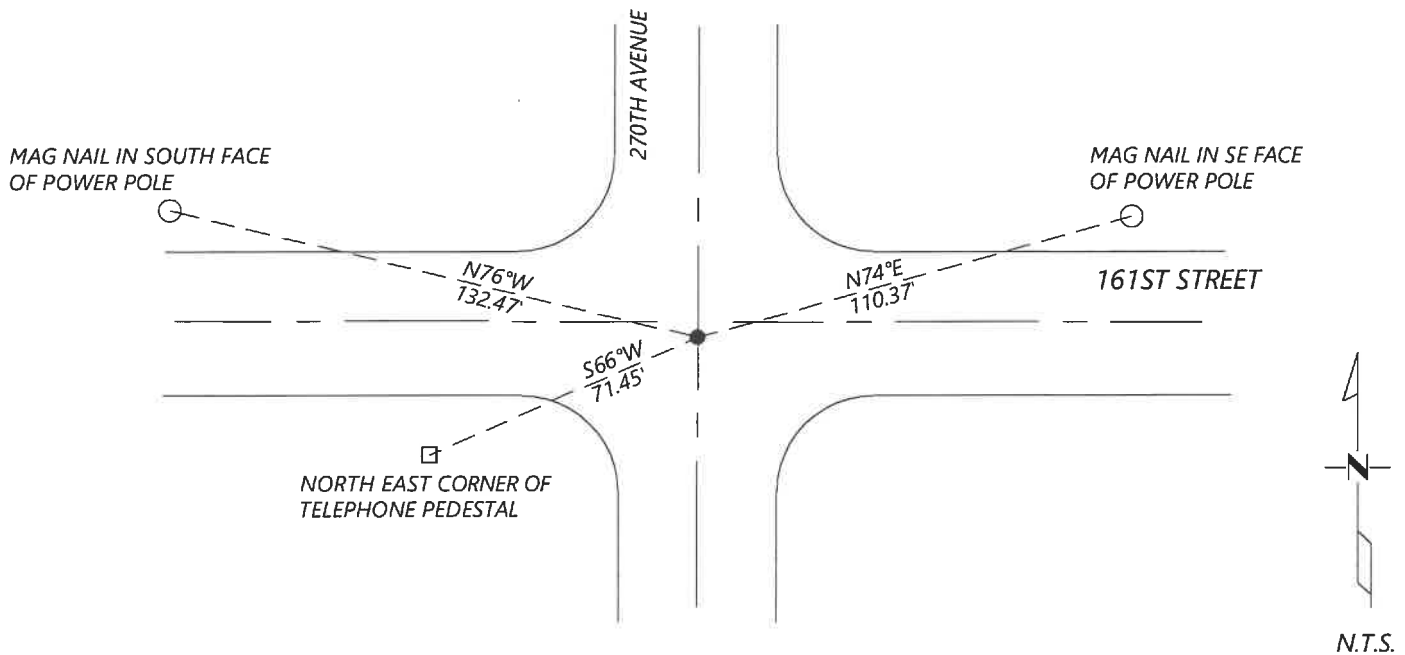
At the corner location shown on the sketch:

On 8/27/2020 found a NO. 5 REBAR WITHOUT CAP, 0.3FT BELOW GRADE  
DATE

left monument as found       lowered monument       removed monument (explain)

On \_\_\_\_\_ placed a \_\_\_\_\_  
DATE

### SKETCH OF REFERENCE TIES



Statement of evidence for this corner location is on back of this page.

I hereby certify that this document was researched and prepared by me or under my direct supervision and that I am a licensed Land Surveyor under the laws of the State of Minnesota.

Signature [Handwritten Signature]

Date 6/16/2021 License No. 45874

Title:

- Land Surveyor       Professional Engineer  
 County Surveyor       County Engineer

#### OFFICE OF THE COUNTY RECORDER

County of Murray

I hereby certify that this document was filed in the Co.

Recorder's office at \_\_\_\_\_ M. on the \_\_\_\_\_ day of \_\_\_\_\_ A.D. 20\_\_\_\_\_

County Recorder Karen Brown

by JUN 22 2021, Deputy

DOCUMENT NO. \_\_\_\_\_

**Statement of Evidence:**

Northeast Corner of Section 16, Township 107 North, Range 39 West, 5th Principal Meridian, Murray County, Minnesota.

*No GLO Notes.*

*2013 December, Corner certificate by Perry Zieske for corners in Section 16 shows that he dug with a backhoe at the corner and found a 6x10" stone. Set  $\frac{5}{8}$ " iron stake with cap LS 23008 and lists coordinates as listed:  
N: 184641.85 E: 564117.35*

*2020 September, Westwood Professional Services searched and found a No. 5 rebar at the corner. The coordinates fit with the 2013 corner record. I accepted the found monument location and set reference ties.*

Analysis of the recovered data, field evidence and survey measurements, indicates that the monument found is the correct perpetuation of this corner. For additional information concerning this corner please contact Westwood Professional Services.